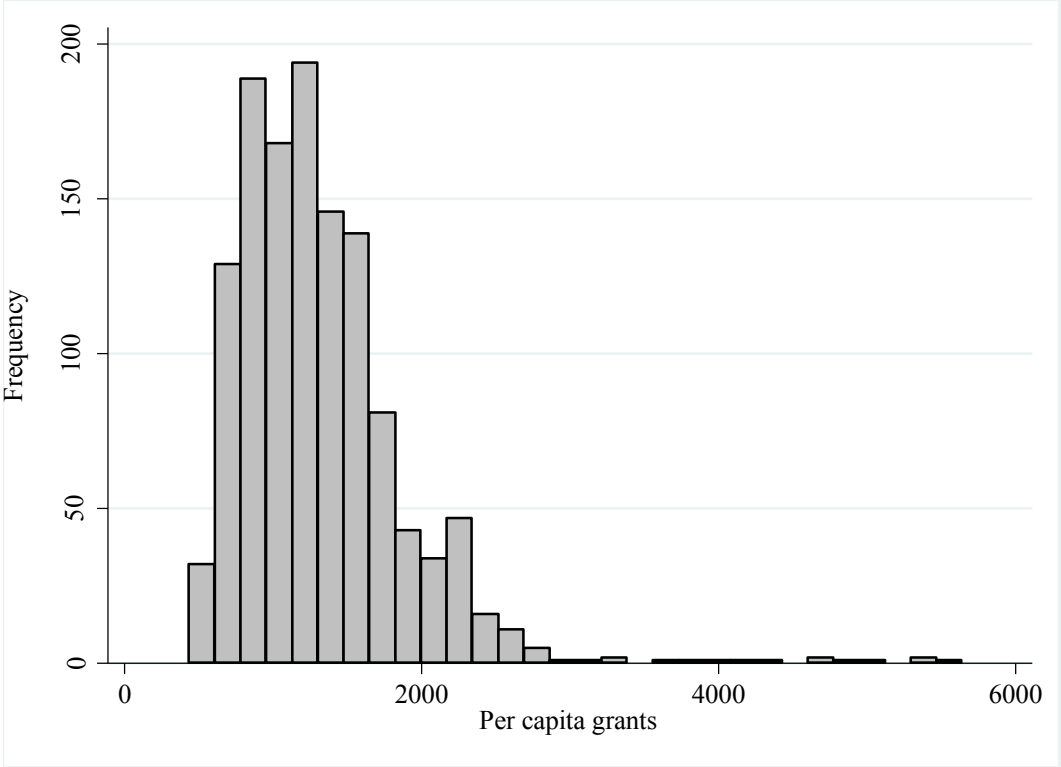
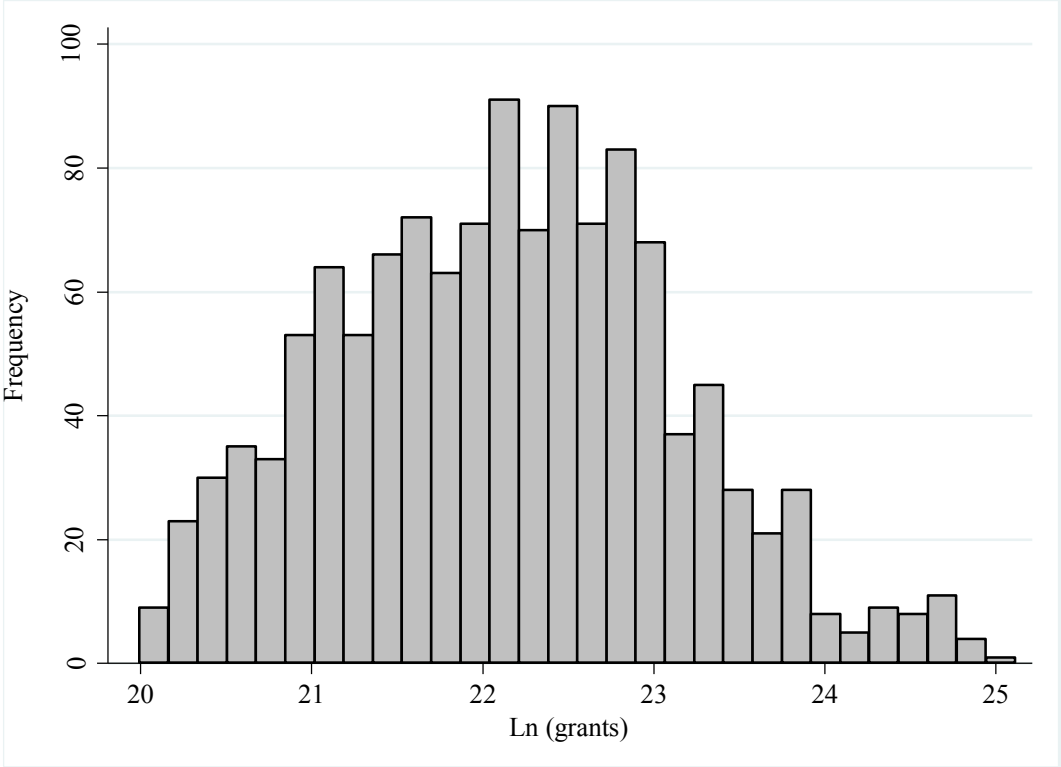


SI Figure 1: Histogram of State Per Capita Grants, 1984-2008



SI Figure 2: Histogram of Ln (State Grants), 1984-2008



SI Table 1: Replicate Table 1 with Per Capita Grants

	(1)	(2)
# Presidential co-partisan senators	25.168** (10.449)	25.625** (10.841)
# Majority party senators		10.780 (10.076)
# Democratic senators		-2.407 (27.839)
% House delegation co-partisans		21.107 (34.342)
Appropriations committee		-0.683 (23.881)
Budget committee		18.089 (25.436)
Finance committee		42.103 (37.890)
Committee chair		31.290 (25.615)
Leader		-60.704 (50.043)
# Freshmen senators		15.131 (17.312)
Senator up for reelection		-11.530 (10.342)
Challenger quality (if facing reelection)		3.610 (4.976)
Constant	1,227.487*** (23.594)	1,656.317*** (64.129)
Observations	1,250	1,250
R-squared	0.721	0.727
Number of states	50	50

Note: Dependent variable is per capita grants received by each state from 1984 to 2008. Least squares models with state and year fixed effects. Standard errors clustered on state in parentheses. All significance tests are two-tailed.

*** p<0.01, ** p<0.05, * p<0.10

SI Table 2: Replicate Table 2 with Per Capita Grants

	(1)
# Presidential co-partisan senators	16.123* (8.859)
# Majority party senators	9.884 (9.845)
# Democratic senators	-3.972 (28.198)
% House delegation co-partisans	-8.446 (34.458)
Appropriations committee	-2.629 (23.624)
Budget committee	13.837 (25.806)
Finance committee	44.171 (38.817)
Committee chair	28.506 (25.493)
Leader	-53.103 (48.499)
# Freshmen senators	16.408 (17.227)
Senator up for reelection	-8.027 (10.396)
Challenger quality (if facing reelection)	3.221 (4.941)
Presidential vote share in state in last election	381.103* (207.223)
Constant	1,480.464*** (118.630)
Observations	1,250
Number of states	50
R-squared	0.730

Note: Dependent variable is per capita grants received by each state from 1984 to 2008. Least squares models with state and year fixed effects. Standard errors clustered on state in parentheses. All significance tests are two-tailed.

*** $p < 0.01$, ** $p < 0.05$, * $p < 0.10$

SI Table 3: Replicate Table 3 with Per Capita Grants

	(1)
# Presidential co-partisan senators	4.257 (5.508)
# Majority party senators	-3.969 (5.711)
# Democratic senators	-26.208* (15.476)
% House delegation co-partisans	3.346 (23.969)
Appropriations committee	0.130 (19.441)
Budget committee	26.571 (16.664)
Finance committee	15.937 (16.617)
Committee chair	13.828 (9.860)
Leader	-25.424 (34.707)
# Freshmen senators	7.622 (8.601)
Senator up for reelection	-8.836* (5.074)
Challenger quality (if facing reelection)	-0.815 (2.615)
Constant	2,633.203*** (31.909)
Observations	1,250
R-squared	0.865
Number of states	50

Note: Dependent variable is per capita retirement and disability spending received by each state from 1984 to 2008. Least squares models with state and year fixed effects. Standard errors clustered on state in parentheses. All significance tests are two-tailed.

*** p<0.01, ** p<0.05, * p<0.10

SI Table 4: Replicate Table 4 with Per Capita Grants

	(1)
# Presidential co-partisan senators	31.360* (18.120)
# Presidential co-partisan senators when in minority	-9.181 (16.032)
# Majority party senators	8.494 (9.179)
# Democratic senators	-1.326 (28.413)
% House delegation co-partisans	21.339 (34.295)
Appropriations committee	-0.805 (23.867)
Budget committee	18.075 (25.477)
Finance committee	42.071 (37.879)
Committee chair	31.180 (25.591)
Leader	-60.678 (50.185)
# Freshmen senators	14.968 (17.233)
Senator up for reelection	-11.665 (10.242)
Challenger quality (if facing reelection)	3.557 (5.025)
Constant	1,181.880*** (80.833)
Observations	1,250
Number of states	50
R-squared	0.727

Note: Dependent variable is per capita grant spending received by each state from 1984 to 2008. Least squares models with state and year fixed effects. Standard errors clustered on state in parentheses. All significance tests are two-tailed. The dummy variable identifying whether or not the president's party is in the minority is subsumed in the year fixed effects.

*** p<0.01, ** p<0.05, * p<0.10

SI Table 5: Replicate Table 5 with Per Capita Grants

	(1)
# Presidential co-partisan senators	21.178* (10.696)
Change in # co-partisans during fiscal year	16.294 (12.931)
# Majority party senators	3.630 (9.274)
# Democratic senators	1.345 (22.706)
% House delegation co-partisans	24.417 (31.400)
Appropriations committee	-2.996 (23.136)
Budget committee	31.741 (22.568)
Finance committee	58.372 (36.403)
Committee chair	21.087 (18.672)
Leader	-53.950 (48.894)
# Freshmen senators	12.172 (18.163)
Senator up for reelection	-13.067 (11.657)
Challenger quality (if facing reelection)	4.763 (5.232)
Constant	1,171.023*** (66.448)
Observations	600
Number of states	50
R-squared	0.820

Note: Dependent variable is per capita grants received by each state from 1984 to 2008. Least squares models with state and year fixed effects. Standard errors clustered on state in parentheses. All significance tests are two-tailed.

*** p<0.01, ** p<0.05, * p<0.10

SI Table 6: Replicate Table 1 with Ln (Grants) and Control for Ln (Population)

	(1)	(2)
# Presidential co-partisan senators	0.018*** (0.005)	0.014*** (0.005)
# Majority party senators		0.011** (0.005)
# Democratic senators		-0.016 (0.010)
% House delegation co-partisans		0.032** (0.014)
Appropriations committee		0.004 (0.011)
Budget committee		0.012 (0.011)
Finance committee		0.017 (0.012)
Committee chair		0.010 (0.010)
Leader		0.003 (0.017)
# Freshmen senators		0.007 (0.007)
Senator up for reelection		-0.003 (0.006)
Challenger quality (if facing reelection)		0.001 (0.002)
State population (logged)	0.750*** (0.116)	0.744*** (0.111)
Constant	10.832*** (1.743)	11.240*** (1.677)
Observations	1,250	1,250
R-squared	0.944	0.947
Number of states	50	50

Note: Dependent variable is logged grants total received by each state from 1984 to 2008. Least squares models with state and year fixed effects. Standard errors clustered on state in parentheses. All significance tests are two-tailed.

*** p<0.01, ** p<0.05, * p<0.10

SI Table 7: Replicate Table 2 with Ln (Grants) and Control for Ln (Population)

	(1)
# Presidential co-partisan senators	0.011** (0.005)
# Majority party senators	0.011** (0.005)
# Democratic senators	-0.016 (0.010)
% House delegation co-partisans	0.025* (0.014)
Appropriations committee	0.004 (0.011)
Budget committee	0.011 (0.012)
Finance committee	0.017 (0.012)
Committee chair	0.009 (0.010)
Leader	0.005 (0.018)
# Freshmen senators	0.007 (0.007)
Senator up for reelection	-0.002 (0.006)
Challenger quality (if facing reelection)	0.001 (0.002)
Presidential vote share in state in last election	0.096 (0.061)
State population (logged)	0.749*** (0.113)
Constant	11.118*** (1.716)
Observations	1,250
Number of states	50
R-squared	0.947

Note: Dependent variable is per capita grants received by each state from 1984 to 2008. Least squares models with state and year fixed effects. Standard errors clustered on state in parentheses. All significance tests are two-tailed.

*** p<0.01, ** p<0.05, * p<0.10

SI Table 8: Replicate Table 3 with Ln (Grants) and Control for Ln (Population)

	(1)
# Presidential co-partisan senators	0.001 (0.002)
# Majority party senators	-0.001 (0.002)
# Democratic senators	-0.006 (0.005)
% House delegation co-partisans	-0.002 (0.009)
Appropriations committee	0.003 (0.007)
Budget committee	0.006 (0.005)
Finance committee	0.012* (0.006)
Committee chair	0.005 (0.004)
Leader	0.001 (0.012)
# Freshmen senators	0.007* (0.004)
Senator up for reelection	-0.003* (0.002)
Challenger quality (if facing reelection)	-0.001 (0.001)
State population (logged)	0.761*** (0.067)
Constant	11.475*** (1.007)
Observations	1,250
R-squared	0.961
Number of states	50

Note: Dependent variable is per capita retirement and disability spending received by each state from 1984 to 2008. Least squares models with state and year fixed effects. Standard errors clustered on state in parentheses. All significance tests are two-tailed.

*** p<0.01, ** p<0.05, * p<0.10

SI Table 9: Replicate Table 4 with Ln (Grants) and Control for Ln (Population)

	(1)
# Presidential co-partisan senators	0.016*** (0.006)
# Presidential co-partisan senators when in minority	-0.004 (0.006)
# Majority party senators	0.010** (0.005)
# Democratic senators	-0.015 (0.010)
% House delegation co-partisans	0.033** (0.014)
Appropriations committee	0.004 (0.011)
Budget committee	0.012 (0.011)
Finance committee	0.017 (0.012)
Committee chair	0.010 (0.010)
Leader	0.003 (0.017)
# Freshmen senators	0.007 (0.007)
Senator up for reelection	-0.003 (0.006)
Challenger quality (if facing reelection)	0.001 (0.002)
State population (logged)	0.744*** (0.111)
Constant	10.912*** (1.668)
Observations	1,250
Number of states	50
R-squared	0.947

Note: Dependent variable is per capita grant spending received by each state from 1984 to 2008. Least squares models with state and year fixed effects. Standard errors clustered on state in parentheses. All significance tests are two-tailed. The dummy variable identifying whether or not the president's party is in the minority is subsumed in the year fixed effects.

*** p<0.01, ** p<0.05, * p<0.10

SI Table 10: Replicate Table 5 with Ln (Grants) and Control for Ln (Population)

	(1)
# Presidential co-partisan senators	0.015*** (0.005)
Change in copartisans during FY	0.015** (0.006)
# Majority party senators	0.006 (0.004)
# Democratic senators	-0.013 (0.010)
% House delegation co-partisans	0.032** (0.013)
Appropriations committee	0.003 (0.012)
Budget committee	0.018 (0.013)
Finance committee	0.023* (0.012)
Committee chair	0.010 (0.008)
Leader	0.001 (0.018)
# Freshmen senators	0.007 (0.008)
Senator up for reelection	-0.003 (0.006)
Challenger quality (if facing reelection)	0.001 (0.003)
State population (logged)	0.807*** (0.127)
Constant	9.944*** (1.907)
Observations	600
Number of states	50
R-squared	0.958

Note: Dependent variable is per capita grants received by each state from 1984 to 2008. Least squares models with state and year fixed effects. Standard errors clustered on state in parentheses. All significance tests are two-tailed.

*** p<0.01, ** p<0.05, * p<0.10

SI Table 11: Models with 1 and 2 Co-Partisan Dummies, Ln(per capita grants)

	(1)	(2)	(3)
One co-partisan senator	0.012 (0.013)	0.012 (0.008)	0.012* (0.006)
Two co-partisan senators	0.028*** (0.010)	0.028*** (0.008)	0.028*** (0.008)
# Majority party senators	0.011** (0.005)	0.011*** (0.004)	0.011*** (0.004)
# Democratic senators	-0.017 (0.010)	-0.017*** (0.006)	-0.017*** (0.005)
% House delegation co-partisans	0.032** (0.014)	0.032*** (0.010)	0.032*** (0.009)
Appropriations committee	0.003 (0.010)	0.003 (0.007)	0.003 (0.006)
Budget committee	0.012 (0.012)	0.012* (0.007)	0.012 (0.007)
Finance committee	0.013 (0.013)	0.013* (0.007)	0.013* (0.007)
Committee chair	0.010 (0.011)	0.010* (0.006)	0.010* (0.005)
Leader	-0.008 (0.019)	-0.008 (0.012)	-0.008 (0.012)
# Freshmen senators	0.005 (0.007)	0.005 (0.006)	0.005 (0.005)
Senator up for reelection	-0.003 (0.006)	-0.003 (0.009)	-0.003 (0.005)
Challenger quality (if facing reelection)	0.001 (0.002)	0.001 (0.003)	0.001 (0.002)
Constant	7.376*** (0.025)	7.376*** (0.019)	7.226*** (0.024)
Observations	1,250	1,250	1,250
R-squared	0.914	0.914	0.949
Number of states	50	50	50

Note: Dependent variable is logged per capita grants received by each state from 1984 to 2008. Least squares models with state and year fixed effects. All significance tests are two-tailed. Model 1 reports robust standard errors clustered on state. Model 2 reports unclustered standard errors. Model 3 reports panel corrected standard errors.

*** p<0.01, ** p<0.05, * p<0.10

SI Table 12: Models with 1 and 2 Co-Partisan Dummies, Per Capita Grants

	(1)	(2)	(3)
One co-partisan senator	25.847 (37.193)	25.847 (19.886)	25.847** (12.558)
Two co-partisan senators	51.247** (21.802)	51.247** (20.418)	51.247*** (15.906)
# Majority party senators	10.793 (11.024)	10.793 (10.652)	10.793 (8.063)
# Democratic senators	-2.406 (27.727)	-2.406 (15.649)	-2.406 (12.443)
% House delegation co-partisans	21.102 (33.988)	21.102 (25.912)	21.102 (20.849)
Appropriations committee	-0.697 (23.446)	-0.697 (18.266)	-0.697 (13.947)
Budget committee	18.107 (23.946)	18.107 (16.744)	18.107 (18.094)
Finance committee	42.107 (37.694)	42.107** (18.899)	42.107** (21.103)
Committee chair	31.280 (26.194)	31.280** (15.314)	31.280** (14.047)
Leader	-60.725 (50.663)	-60.725** (29.894)	-60.725* (32.789)
# Freshmen senators	15.126 (17.484)	15.126 (14.197)	15.126 (10.262)
Senator up for reelection	-11.526 (10.080)	-11.526 (22.152)	-11.526 (19.133)
Challenger quality (if facing reelection)	3.610 (4.974)	3.610 (7.866)	3.610 (5.960)
Constant	1,656.254*** (59.703)	1,656.254*** (49.869)	1,402.748*** (49.227)
Observations	1,250	1,250	1,250
R-squared	0.727	0.727	0.852
Number of states	50	50	50

Note: Dependent variable is per capita grants received by each state from 1984 to 2008. Least squares models with state and year fixed effects. All significance tests are two-tailed. Model 1 reports robust standard errors clustered on state. Model 2 reports unclustered standard errors. Model 3 reports panel corrected standard errors.

*** p<0.01, ** p<0.05, * p<0.10

SI Table 13: Replicate Core Results of Table 1 With State Demographics

	(1)
# Presidential co-partisan senators	0.014*** (0.005)
# Majority party senators	0.011** (0.005)
# Democratic senators	-0.017* (0.010)
% House delegation co-partisans	0.033** (0.014)
Appropriations committee	0.002 (0.010)
Budget committee	0.012 (0.012)
Finance committee	0.013 (0.014)
Committee chair	0.010 (0.011)
Leader	-0.009 (0.019)
# Freshmen senators	0.004 (0.007)
Senator up for reelection	-0.003 (0.006)
Challenger quality (if facing reelection)	0.001 (0.002)
State population (in millions)	0.002 (0.008)
State per capita income (in \$1,000s)	-0.002 (0.004)
State unemployment rate	0.002 (0.006)
Constant	7.463*** (0.155)
Observations	1,250
Number of states	50
R-squared	0.914

Note: Dependent variable is per capita grants received by each state from 1984 to 2008. Least squares models with state and year fixed effects. Standard errors clustered on state in parentheses. All significance tests are two-tailed.

*** p<0.01, ** p<0.05, * p<0.10

SI Table 14: Replicate Table 1 With Fiscal Year's Congress (Not Enacting Congress)

	(1)	(2)
# Presidential co-partisan senators	0.021*** (0.006)	0.019*** (0.006)
# Majority party senators		0.013** (0.006)
# Democratic senators		-0.016 (0.011)
% House delegation co-partisans		0.025 (0.015)
Appropriations committee		0.003 (0.011)
Budget committee		0.011 (0.012)
Finance committee		0.003 (0.013)
Committee chair		0.001 (0.011)
Leader		-0.005 (0.020)
# Freshmen senators		-0.001 (0.008)
Senator up for reelection		-0.001 (0.008)
Challenger quality (if facing reelection)		0.000 (0.002)
Constant	7.070*** (0.014)	7.291*** (0.022)
Observations	1,250	1,250
R-squared	0.911	0.913
Number of states	50	50

Note: Dependent variable is per capita grants received by each state from 1984 to 2008. Least squares models with state and year fixed effects. Standard errors clustered on state in parentheses. All significance tests are two-tailed.

*** p<0.01, ** p<0.05, * p<0.10